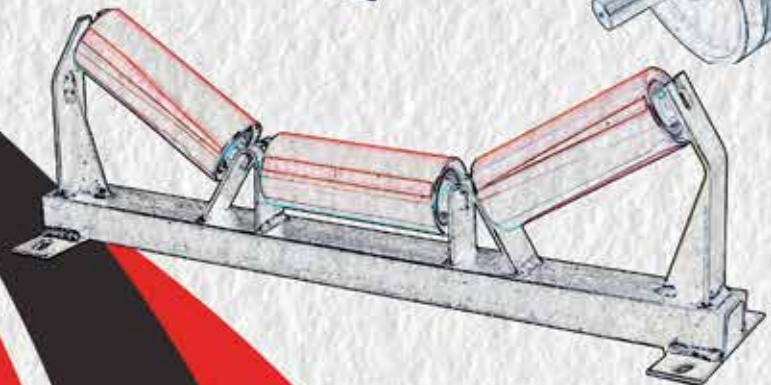
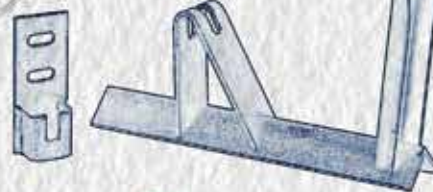
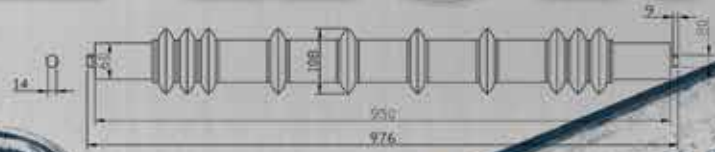
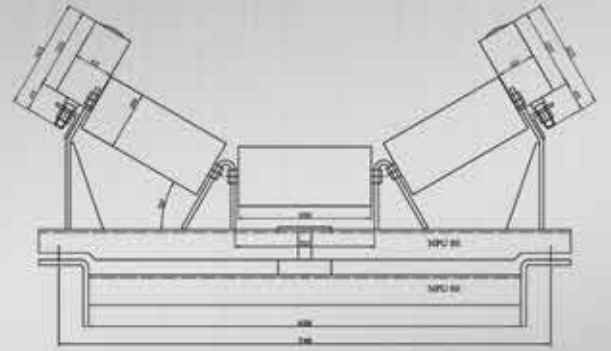
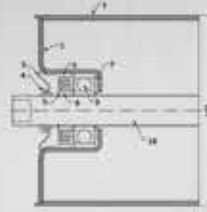


# RUL-KON





## ABOUT US

Our company has been serving industry sector for producing conveyor equipment and spare parts since 1985.

Our Products:

- Roller's bearing housings (tube ends)
- Idler supports and connection elements
- Belt conveyor roller stations
- Conveyor rollers
- Belt drums

Our company is a sensible choice of contractors, because of quality, experience

and large production range. Our main products are bearing housings and roller stands and connection elements. You can always find bearing housings for various dimension in our warehouse. We can also manufacture your special housings.

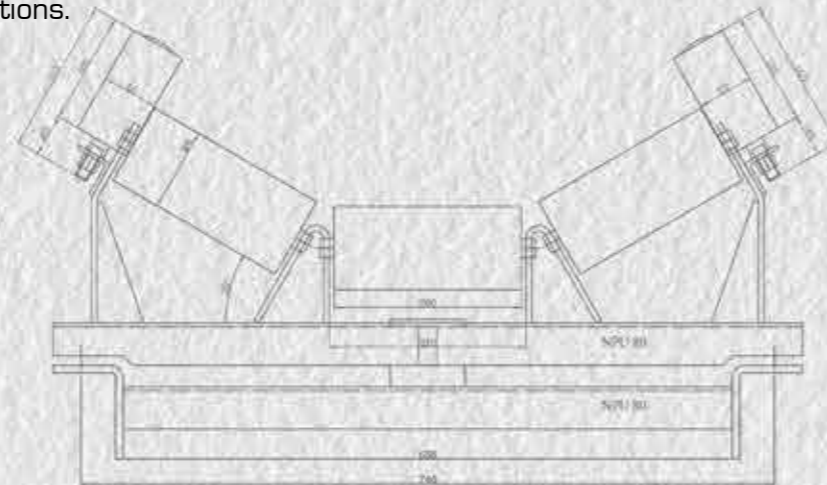
Conveyors are systems that save time and energy in the transfer of part or bulk material. There are belt, roller, chain, bucket, spiral and pneumatic conveyors.

## OUR MISSION

In the sector we serve, to adapt to the developing technology, to understand the needs of our customers in the best way, to provide the best solution and to meet their expectations.

## OUR VISION

In the sector we serve, to present our products to our customers in the best quality and price and in the best time.



## BELT PULLEY



Carrier, impact and return rollers, roller stations and belt drums are manufactured in the dimensions you want.

These are the elements that give the necessary tension to the belt in the belt conveyor system and transfer the movement from the motor-reducer to the belt.



## BELT ROLLER STATION



Carrier, impact and return rollers, roller stations and belt drums are manufactured in the dimensions you want.

Roller stations are stands that hold the rollers that carry the belt on belt conveyors. Generally, 3 or 2 roller stations are used. Roller travers are conveyor elements on which conveyor rollers are mounted..



## CONVEYOR ROLLERS



We can produce rollers, stations and pulleys for your special dimension.



## ROLLER SUPPORTS



- Station roller outer support
- Station roller inner support
- Station connection element
- Return roller connection element

Description	4x50 mm	5x50 mm	6x60 mm
Outer support for 400 belt	*		
Outer support for 500 belt	*	*	*
Outer support for 600 belt	*	*	*
Outer support for 750 belt	*	*	*
Outer support for 900 belt		*	*
Outer support for 1000 belt			*
Outer support for 1200 belt			*
Inner support	*	*	*
Station connection element	*	*	*
Ret. rol. connection element	*	*	*



## BEARING HOUSING



In our company, many kind of bearing housings are manufactured.

We are manufacturing bearing housings with our experience of being in the sector for many years and our knowledge of steel sheet deep drawing. Bearing housings are produced by metal sheets and they are also suitable for bearing bore. Labyrinthed housings protect bearing from moisture, dust and other hard conditions. It causes long life service. We have also polyamide tight fitted bearing housings. You can find our housing table below.

### Labyrinthed Housing

HOUSING FOR BEARING 6204												
		Ø 60	Ø 63	Ø 76	Ø 89	Ø 102	Ø 108	Ø 114	Ø 127	Ø 133	Ø 140	Ø 159
FLANGE	2 mm	*	*	*	*	*	*	*	*	*	*	*
COLLAR	3 mm	*	*	*	*	*	*	*	*	*	*	*
TURN BACK	2 mm			*	*	*	*	*	*	*	*	*

HOUSING FOR BEARING 6205												
		Ø 60	Ø 63	Ø 76	Ø 89	Ø 102	Ø 108	Ø 114	Ø 127	Ø 133	Ø 140	Ø 159
FLANGE	2 mm		*	*	*	*	*	*	*	*	*	*
COLLAR	3 mm		*	*	*	*	*	*	*	*	*	*
TURN BACK	2 mm			*	*	*	*	*	*	*	*	*

HOUSING FOR BEARING 6206												
		Ø 60	Ø 63	Ø 76	Ø 89	Ø 102	Ø 108	Ø 114	Ø 127	Ø 133	Ø 140	Ø 159
FLANGE	2 mm			*	*	*	*	*	*	*	*	*
COLLAR	3 mm			*	*	*	*	*	*	*	*	*
TURN BACK	2 mm				*	*	*	*	*	*	*	*

\* signed housings are ready in our stock.

HOUSING FOR BEARING 6305												
		Ø 60	Ø 63	Ø 76	Ø 89	Ø 102	Ø 108	Ø 114	Ø 127	Ø 133	Ø 140	Ø 159
FLANGE	3 mm			*	*	*	*	*	*	*	*	*
COLLAR	4 mm			*	*	*	*	*	*	*	*	*

HOUSING FOR BEARING 6306												
		Ø 60	Ø 63	Ø 76	Ø 89	Ø 102	Ø 108	Ø 114	Ø 127	Ø 133	Ø 140	Ø 159
FLANGE	3 mm			*	*	*	*	*	*	*	*	*
COLLAR	4 mm			*	*	*	*	*	*	*	*	*

HOUSING FOR BEARING 6308												
		Ø 60	Ø 63	Ø 76	Ø 89	Ø 102	Ø 108	Ø 114	Ø 127	Ø 133	Ø 140	Ø 159
FLANGE	4 mm				*	*	*	*	*	*	*	*

### Unlabyrinthed Thight Fitted Bearing Housing

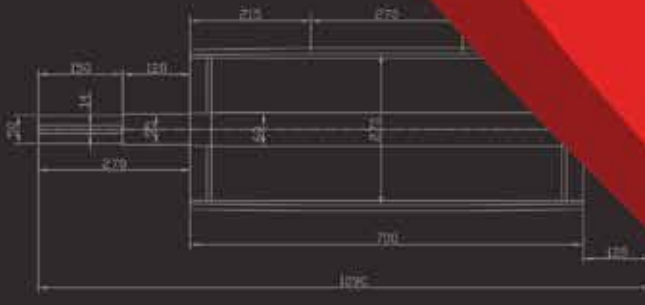
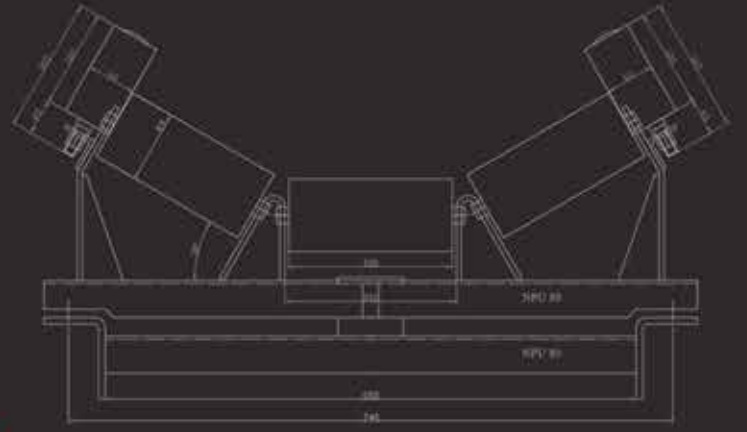
DIAMETER OF TUBE								
	Ø 42	Ø 48	Ø 51	Ø 60	Ø 63	Ø 76	Ø 89	Ø 102
6000	*	*	*	*	*			
6201	*	*	*	*	*			
6202		*	*	*	*	*		
6203			*	*	*	*	*	
6204				*	*	*	*	*

\* (There are no polyamide seal in 6000, 6201 housings.)

\* signed housings are ready in our stock.

UNLABYRINTHED THIGHT FITTED BEARING HOUSING						
	Ø 42	Ø 48	Ø 51	Ø 60	Ø 70	P : Polyamid
6000	P	P	P			S : 1.5 mm. Sac
6201	P	P	P			
6202	P	P	P	S	S	





1 Adet

# RUL-KON

rulkon.com.tr



1211. Sk. No: 16, 06370  
Ostim Osb/Yenimahalle/Ankara/Türkiye



+90 312 3547633



+90 312 3546524



info@rulkon.com.tr